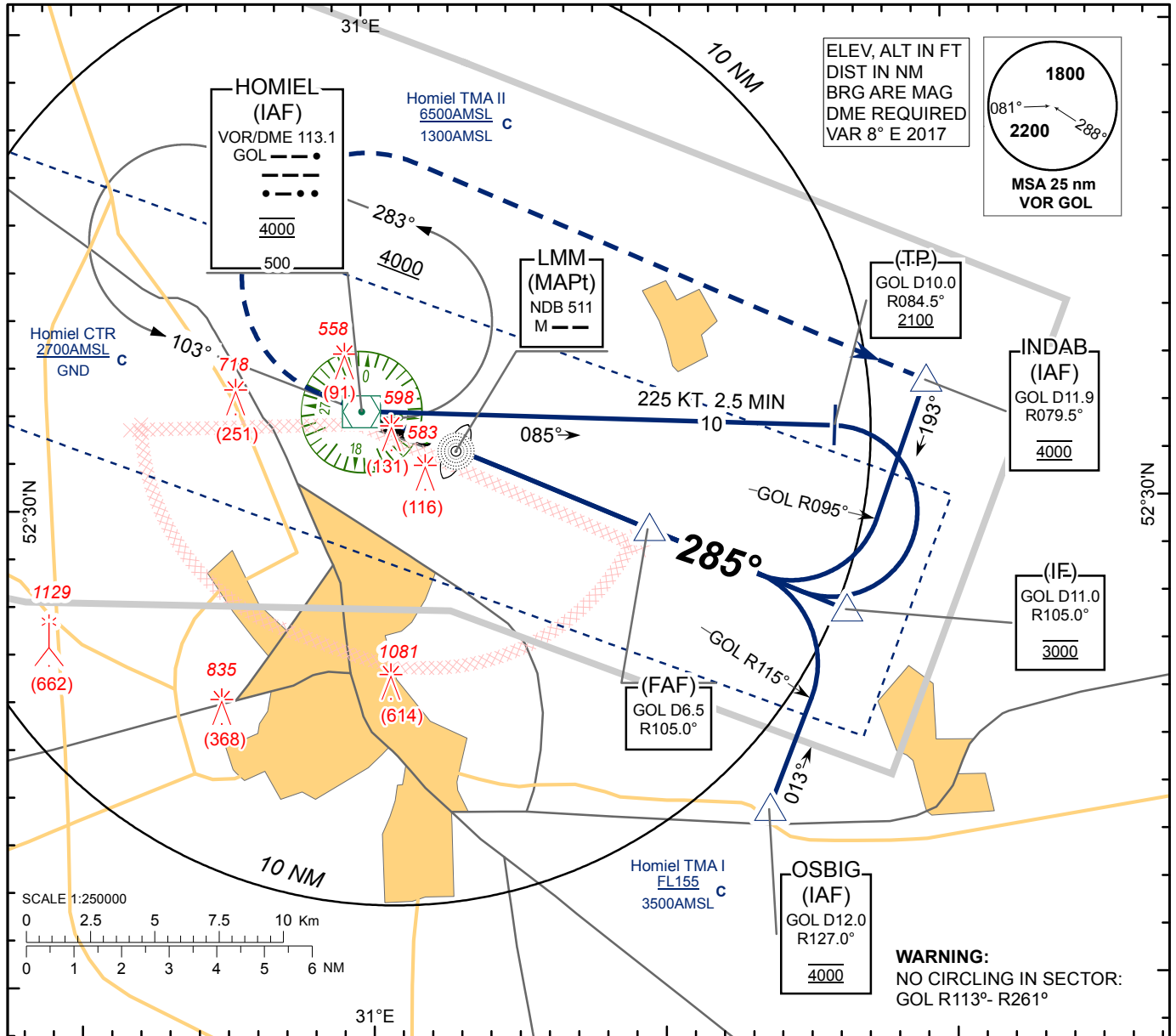


**INSTRUMENT
APPROACH
CHART - ICAO**

AERODROME ELEV 471
HEIGHTS RELATED TO
THR RWY 28 - ELEV THR 467

APP 126.100
TWR 118.100
MET 119.550 (EN)
124.475 (RUS)

**HOMIEL
VOR
RWY 28**

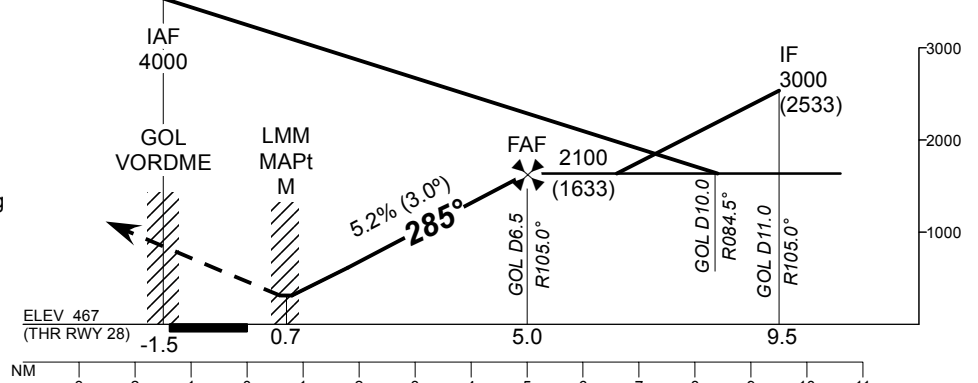


TRANSITION ALTITUDE: 6000

Alt set: hPa (mm on req)
QNH (QFE on req)

MISSED APPROACH

Climb on track 285°
to 1100 (633) or above
turn RIGHT to (IAF) INDAB
climbing to 2000 (1533) and follow
ATC instructions.



CHANGE: COOR FAF: DLTD LOW MV.

Aircraft Category		A	B	C	D	GOL	7	6	5	4	3	2	
Straight-in Approach OCA(H)	VOR/DME	780 (310)				DIST THR	5.5	4.5	3.5	2.5	1.5	0.5	
						ALTITUDE	2100	1940	1620	1310	990	680	
						HEIGHT	(1633)	(1473)	(1153)	(843)	(523)	(213)	
Circle - to - land		860 (390)	860 (390)	1120 (650)	1120 (650)	Timing not authorized for defining the MAPt							
						GS	Kts	120	140	160	180	200	220
						Desc.Rate(5.2%)	ft/min	630	740	840	950	1050	1160

HOMIEL
VOR
RWY 28

AERONAUTICAL DATA TABULATION

VOR approach to RWY28 from GOL VOR/DME, INDAB, OSBIG	
Fix/point	Coordinates
(IAF) GOL VOR/DME	523200.6N 0305949.9E
(IAF) INDAB R079.5° D11.9 GOL	523230N 0311915E
(IAF) OSBIG R127.0° D12.0 GOL	522333N 0311338E
(FAF) R105.0° D6.5 GOL	522928N 0310939E
NDB M (MAPt)	523108.7N 0310303.7E
(TP) R084.5° D10.0 GOL	523134N 0311607E
(IF) R105.0° D11.0 GOL	522742N 0311624E
THR RWY 28	523122.59N 0310203.83E